

# KI-Campus

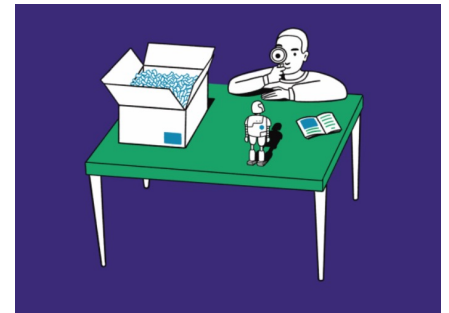
## The learning platform for artificial intelligence

The AI Campus is the learning platform for artificial intelligence with free and openly licensed online courses, videos and podcasts on various AI topics.

As a research and development project, the AI Campus is funded by the Federal Ministry of Education and Research (BMBF).

This ensures that all learning opportunities fit into a needs-based curriculum and have high-quality content.

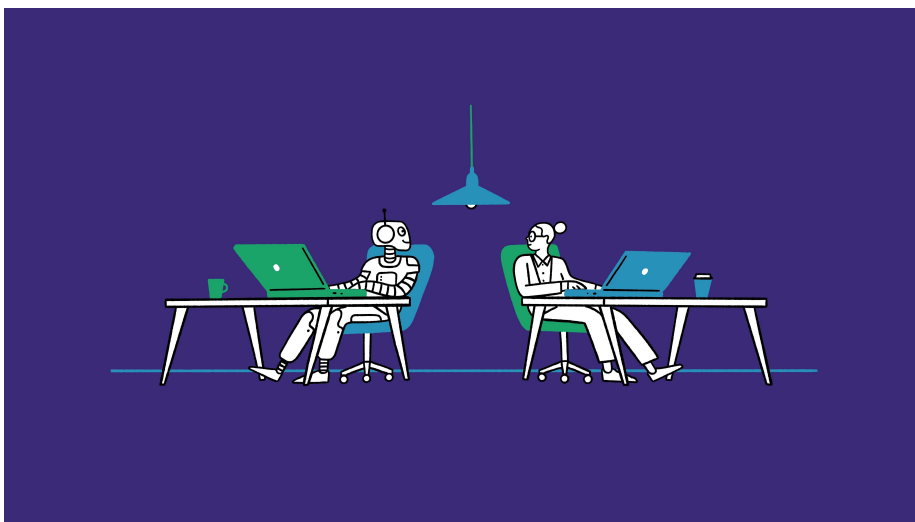
The modules developed within the framework of this catalogue follow a sequential structure and serve to teach basic competencies, area-specific competencies (e.g. AI in medicine) and interdisciplinary competencies (e.g. ethical and legal issues). Through the teaching of basic competences, participants learn the most important concepts of AI.



All created learning offers and used technologies of the AI Campus follow the principle of openness of resources and source codes.

The Stifterverband, the German Research Center for Artificial Intelligence (DFKI), the Hasso Plattner Institute (HPI), NEOCOSMO and the mmb Institute have been developing the AI Campus together with numerous partners since October 2019.

<https://ki-campus.org/>



The aim is to counter the acute shortage of skilled personnel and to strengthen a mature approach to the topic of artificial intelligence in the general public.

In order to provide a high-quality offer, the DFKI produces several in-house courses. Further learning offers of the AI Campus are created within the framework of competitions and cooperations. The basis for all learning opportunities on the platform is a content catalogue and competence framework developed by the DFKI.


The aim is for learners to understand what AI is, where AI is used and how AI affects them. Topics such as problem solving, knowledge representation and inference, machine learning, natural language processing and robotics are the subject of in-depth teaching.

DFKI is also developing AI-based functionalities and applications that enable a personalised and adaptive learning experience, as well as a multimodal interface that enables mobile and conversational interaction with the platform.


### Contact:


DFKI GmbH  
Speech - and Language  
Technology,

Dr. Kinga Schumacher

 +49 30 23895 1819

 dfki.de

 Alt-Moabit, Nr. 91c  
D-10559, Berlin

 kinga.schumacher@dfki.de